

Your membership helps us support communities in Oxfordshire to continue to be great places to live and work.

## WHAT OUR MEMBERS SAY

*"Leaving here, there will be many things I will miss and your cheerful and efficient help will certainly be one of them!"*

**NETTLEBED CAR SCHEME COORDINATOR**

*"The report is logically structured and very impressive in the way it has collated the interaction with the town's community groups. It identifies common concerns from feedback, proposes recommendations to address the concerns and presents new ideas emerging from the consultation."*

**RESIDENT FEEDBACK ON A CFO CONSULTATION REPORT**

*"The workshops were enjoyable because they were interactive.... particularly enjoyed the craft and practical activities... presentations were good and everyone had a chance to speak.... A good evening!"*

**FEEDBACK FROM A COMMUNITY CONSULTATION EVENT WITH YOUNG PEOPLE**

*"A member had a fall and broke his hip. I phoned him to check and he seemed a bit confused and couldn't remember if he paid by direct debit, how big his oil tank is, or how full the tank is. It is important that he keeps warm so he and I have agreed that I will order the minimum 500 litres for him."*

**VOLUNTEER OIL SCHEME COORDINATOR**

Community First Oxfordshire  
South Stables, Worton Farm,  
Worton, Witney, Oxon OX29 4SU

**T: 01865 883488**

**E: [info@communityfirstoxon.org](mailto:info@communityfirstoxon.org)**

Community First Oxfordshire is an  
independent charity founded in 1920.  
To find out more visit our website:

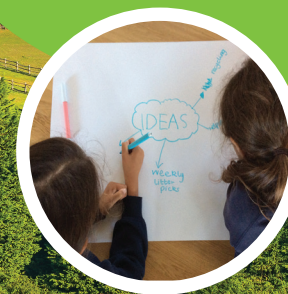
**[www.communityfirstoxon.org](http://www.communityfirstoxon.org)**

Registered charity no: 900560

## MEMBERSHIP 2020-21

### Join us!

Your membership helps us support communities in Oxfordshire to continue to be great places to live and work.



**YOUR SUPPORT HELPS US TO HELP YOU:**

CFO advocates on behalf of rural and urban communities, keeping the community voice heard.



# YOUR MEMBERSHIP FEE HELPS US TO OFFER THE FOLLOWING **FREE** SERVICES TO ALL COMMUNITIES IN OXFORDSHIRE:

- **Information and advice** on issues affecting your community
- **Bespoke support** and advice for community activity, such as social action projects, community-led plans, community halls and shops, transport schemes, and volunteer support
- **'Together we can' community development workshops** helping Parish Councils and community groups gain insight, skills and build confidence to strengthen and sustain community life in an inclusive way
- **Networking and training opportunities** such as community halls and shops network meetings and rural Oxfordshire network events
- **Advocating on behalf of Oxfordshire's rural communities**, by responding to local and national consultations
- **A national voice on rural and community development matters** through our umbrella body, Action with Rural Community in England (ACRE)

Fees applicable (member discounts apply):

- Housing Need Surveys
- Neighbourhood Planning support
- Community Infrastructure Assessments
- Community Led Plans if in West Oxon

## WHAT WE DO

As a community development charity, we support and advise on community-led actions across Oxfordshire.

We support:

19

Community shops

290

Community buildings

72

Community transport schemes

8

Neighbourhood Plans

6

Communities with Housing Needs Surveys

2

Major housing and community development programmes

## IN 2020-21 CFO WILL FOCUS ON:

- **Placemaking on new housing developments**, building community by bringing together old and new residents
- **Support and promote Community-Led Housing across the Thames Valley** through a new support service: 'Collaborative Housing'
- **Advocating for truly affordable housing**
- **Working with planning authorities and developers** to ensure communities get the best out of new housing developments
- **Supporting local groups in community-based climate action**
- **Continuing to encourage new people (young and old) to get involved** in their communities

